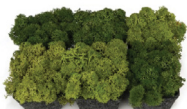


MATERIAL LAB HANDBOOK



The Material Lab is a research and programming center dedicated to advancing the study of materials at Pratt through object-based inquiry. The Lab holds a circulating library of physical samples that are available to facilitate multidisciplinary design conversation and help support student research.





MATERIAL
LAB

HANDBOOK

PRATT INSTITUTE SCHOOL OF DESIGN

Fall 2021



CONTENTS

About the Lab

Collection Overview

Using the Lab

Partners and Community





ABOUT THE LAB

Mission Statement

The Material Lab is a collaborative research center dedicated to advancing the study of materials at Pratt. Housing over 25,000 unique material samples, the Material Lab's circulating collection supports haptic design research and facilitates practical discussion about materials grounded in their characteristics, composition, application, and impact. Additionally, our community-building initiatives supplement and contextualize our physical collection and include frequent office and studio visits, a lunch-and-learn series, and our annual Material Lab Prize. Through the Material Lab's expansive resources and programming, designers at Pratt establish and refine a material literacy that will guide their design work in and beyond their time at Pratt.

Hours

Tue – Thu:
9AM – 6PM

Mon & Fri:
12PM – 3PM
by appointment only

*All class visits must be scheduled
in advance

Location

We're located in ENG 005, in the basement of Engineering Building on Pratt's Brooklyn campus (200 Willoughby Avenue, Brooklyn, NY 11205).

Please address deliveries to:

The Material Lab at
Pratt Institute
379 DeKalb Avenue
Brooklyn, NY
11205
ATTN: Jay Lemire, Eng 005

Contact

For general inquiries,
or to book appointments
contact:

materiallab@pratt.edu

(718) 636-3765

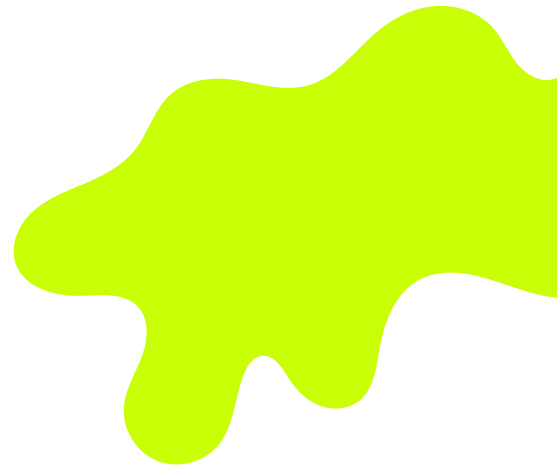


COLLECTION OVERVIEW

Material Categories / Physical Collection

The cornerstone of the Material Lab is its physical collection of circulating samples. While the Lab's origins as a resource for Pratt's Interior Design department are evident in our range of interior surfaces and finishes, our composition-driven organization helps to support exploration and experimentation for students in a range of art and design fields. Our primary collection is organized within 9 categories:

- Surface Finishes
- Textiles
- Wood
- Glass
- Ceramics
- Polymers
- Composites
- Metal



To learn more about how samples are chosen for the Lab, please check out the Acquisitions/Donations section of this guide

Other Resources

Non-Circulating Print Resources

In addition to our circulating samples, the Lab also holds a small library of non-circulating books and periodicals, including a current subscription to Metropolis magazine. While not available for check-out, these may be scanned as needed in the Lab.

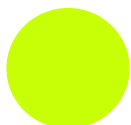
Online Resources

Pratt community members also have access to a range of material-related online resources including [Material Connexion](#) and [Spec Simple](#). The following libguides also provide valuable information about conducting materials research:

[Materials Research](#) by Cheryl Costello | [Materials Research](#) by Sophia Du Val

Special Collections

The Material Lab has curated a number of non-circulating special collections items. These samples can be accessed in person at the lab, or through our digital pilot collection in ArtStor.





USING THE LAB

How to Become a Member

The Material Lab is open to all Pratt students, staff, and faculty. To become a member, all users must complete a Material Lab Registration Agreement form, acknowledging understanding of Material Lab policies and user responsibilities, and attend an orientation.

Ordinarily, orientation sessions are arranged by faculty to introduce a group of students to the lab at once, but if you have missed your session, or would like to become a member independent of a class, you can also register for an orientation.

If you are faculty and would like to schedule an orientation for your class, [book your group orientation session here!](#)

If you are a student and would like to schedule an individual orientation, or would like to meet to discuss in-depth research, [book your meeting here!](#)

If you are a member of the Pratt community and would like to schedule a general meeting in the Material Lab, [book your meeting here!](#)



Circulation Policies

All materials borrowed must be returned on or before the due date. Fines are charged for items returned after their due date. Researchers are responsible for all materials borrowed on their account, and any late fees accrued.

Researchers can borrow a maximum of 12 items at one time. Items can be borrowed for 2 weeks and can be renewed for an additional 2 weeks. While there is no set maximum to the number of times an item can be renewed, all items are always due back on the last day of the semester, regardless of the check-out or renewal date.

Researchers with late items will be charged a fee of \$0.50 per item per day, to a maximum of \$10.00

Students with lost or damaged items will be charged a fee of \$10.00 per item. Damaged items include cracked, chipped, torn items, or items whose label has been removed.

All fees must be paid in PrattBucks as soon as the item is returned late or reported lost or damaged.

No additional items can be borrowed until all late or lost/damaged fees have been paid.

Reference books and magazines are non-circulating and may not be borrowed.

Team Projects

While we encourage and support collaborative work, unfortunately teams cannot collectively share responsibility for borrowed items. If you are working on a team project, designate one (1) person within your team who will assume responsibility for your materials and who will return them to the Lab when you are finished.

While Using The Lab

As a shared community resource, the Lab's usefulness depends upon all members respecting the space and working to keep things tidy. Please keep drawers organized while you work and clean up when you are finished. If you do not remember where items go, the Material Lab staff are here to help!

We regret that the Material Lab cannot be a storage space for projects, and any work left here may be discarded unless arrangements have been made with the Material Lab in advance.

Request a New Material

The Material Lab's collection is constantly evolving as we incorporate new materials, adapt to the needs of our researchers, and respond to changes within the fields of design.

We strongly encourage students and faculty alike to participate in building a growing body of knowledge. If there is a material that you are interested in working with, or learning more about, email Material Lab Manager Jay Lemire. Be sure to include the phrase "New Material Request" in your subject line, and try to include as much information as you can about the material, and we will let you know if and when we expect to receive a sample!



PARTNERS & COMMUNITY

The Material Lab is committed to fostering discussion and building a growing body of knowledge pertaining to material research through a range of initiatives.

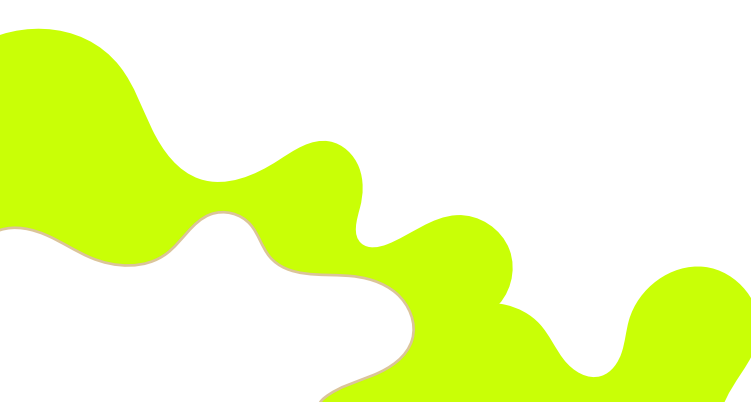
If you are affiliated with a company or organization that could be interested in contributing to the Material Lab, we'd love to hear from you!

Acquisitions and Donations

Development of the Material Lab is guided by our goal to present new, novel, and unusual material innovation, while also maintaining representative samples of basics that form the foundations of design assignments and material research.

We acquire materials through a variety of channels, but a primary source is donations from vendors, and local design and architecture firms, to whom we are grateful. By contributing to the Material Lab, our donors and sponsors help enrich the educational experience of the next generation of design professionals. We are also proud of the opportunity that these partnerships offer in extending the lifecycle of design samples to help remove them from the waste stream.

Donations that are not integrated into our collection are delivered to Pratt's GiveTake, a campus recycling initiative that provides students with supplies for creative re-use.



Material Lab Prize

The Material Lab Prize is a \$1,000 grant awarded annually by the Material Lab to a student designer whose work makes use of trash. The prize seeks to celebrate and exhibit student work that considers waste streams as a springboard for new design thinking.

In collaboration with the Center for Sustainable Strategies, and Pratt's Givetake recycling initiative, the Material Lab Prize challenges designers at Pratt to incorporate salvaged material, repurposed waste, or found objects in their work. We invite students from any department to submit completed designs that make significant use of reclaimed materials. Submissions at any scale will be considered, including, but not limited to: apparel, architectural models, furnishings, household goods, or speculative projects.

Submissions will be reviewed by an interdisciplinary guest jury of designers. The review process will culminate in an exhibition of submitted work, where our jury will select a recipient/recipients.

If you are a designer, or represent a firm, that could be interested in participating in the Material Lab Prize, we'd love to hear from you!

